

Cordova Bay Rd between Lochside Dr and Walema Ave
February 25, 2020 To February 27, 2020



The data presented here is for information purposes only and should not be considered authoritative for construction, geotechnical, engineering, navigational, legal, or other site-specific uses. The information shared is owned by the Transportation Division of the Engineering Department at the District of Saanich. Accuracy is not guaranteed.

Start Date: 24-Feb-20
 Start Time: 0:03
 Station ID: M0012-03

Location 1: Cordova Bay Rd between Lochside Dr and Walema Ave

Note:

DATE:	February 24, 2020		February 25, 2020		February 26, 2020		February 27, 2020		February 28, 2020		WK AVG		WK AVG	HOURLY
	MON		TUE		WED		THURS		FRI		NB	SB	CH 1+2	%
Time:	NB	SB	NB	SB	NB	SB	NB	SB	NB	SB	NB	SB		
12-1 AM			2	5	10	8	5	9			6	7	13	0.2%
1-2 AM			2	2	4	3	4	2			3	2	6	0.1%
2-3 AM			2	0	2	2	3	2			2	1	4	0.1%
3-4 AM			4	2	5	5	6	7			5	5	10	0.1%
4-5 AM			10	6	11	2	11	3			11	4	14	0.2%
5-6 AM			23	19	25	10	21	7			23	12	35	0.5%
6-7 AM			75	45	63	43	68	38			69	42	111	1.6%
7-8 AM			197	180	220	156	183	178			200	171	371	5.4%
8-9 AM			240	315	285	318	268	298			264	310	575	8.4%
9-10 AM			233	177	237	205	226	203			232	195	427	6.2%
10-11 AM			205	160	225	187	211	190			214	179	393	5.7%
11-12 PM			258	216	210	254	235	222			234	231	465	6.8%
12-1 PM			200	214	259	258	238	239			232	237	469	6.8%
1-2 PM			233	232	275	297	285	212			264	247	511	7.5%
2-3 PM			264	292	288	256	307	296			286	281	568	8.3%
3-4 PM			341	261	344	267	391	322			359	283	642	9.4%
4-5 PM			422	317	384	297	441	343			416	319	735	10.7%
5-6 PM			301	264	337	254	338	306			325	275	600	8.8%
6-7 PM			175	146	186	156	172	181			178	161	339	4.9%
7-8 PM			112	102	127	133	108	99			116	111	227	3.3%
8-9 PM			80	59	66	85	82	95			76	80	156	2.3%
9-10 PM			60	44	49	69	59	49			56	54	110	1.6%
10-11 PM			31	15	35	25	28	22			31	21	52	0.8%
11-12 AM			11	12	7	9	14	19			11	13	24	0.4%
LANES			3481	3085	3654	3299	3704	3342			3613	3242	6855	100.0%
TOTAL			6566		6953		7046				6860			
	MON		TUE		WED		THURS		FRI		WK AVG			

PEAK HOUR					TOTAL VEHICALS-PEAK PERIODS		2 HOUR PEAK INTERVALS				
MAX. 7 - 9 am PEAK HOUR	575	⇒	8.4%	between 8-9 AM	3215	⇒	6 HR TOTAL	2 HR AM (7 - 9 AM)			
MAX. 7 - 11 am PEAK HOUR	575	⇒	8.4%	between 8-9 AM	2281	⇒	4 HR TOTAL	VEH / HR	VEH / 2HR	2 HR %	
MAX. 11 am - 1 pm PEAK HOUR	469	⇒	6.8%	between 12-1 PM				7-8 AM	371	946	13.8%
MAX. 11 am - 3 pm PEAK HOUR	568	⇒	8.3%	between 2-3 PM				8-9 AM	575		
MAX. 4 - 6 pm PEAK HOUR	735	⇒	10.7%	between 4-5 PM				2 HR NOON (11 - 1 PM)			
MAX. 3 - 6 pm PEAK HOUR	735	⇒	10.7%	between 4-5 PM				VEH / HR	VEH / 2HR	2 HR %	
					2.13	⇒	6-24 HR FACT.	11-12 PM	465	934	13.6%
					3.01	⇒	4-24 HR FACT.	12-1 PM	469		
								2 HR PM (4 - 6 PM)			
								VEH / HR	VEH / 2HR	2 HR %	
								4-5 PM	735	1335	19.5%
								5-6 PM	600		

Cordova Bay Rd between Lochside Dr and Walema Ave

Northbound

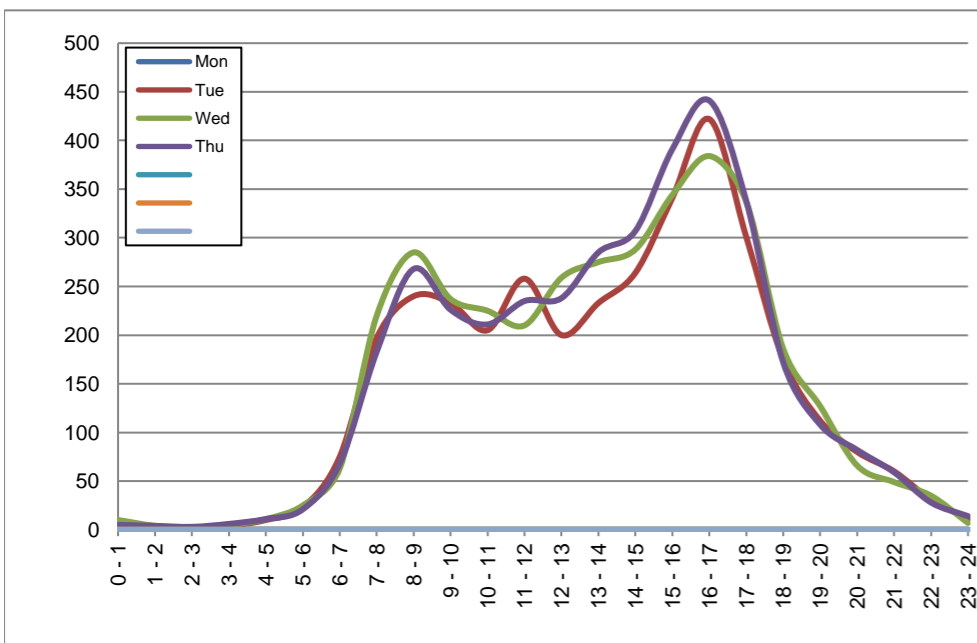
February 24, 2020 to February 27, 2020

Hourly Volumes

Time Period	Mon	Tue	Wed	Thu			
	Feb 24	Feb 25	Feb 26	Feb 27			
0 - 1		2	10	5			
1 - 2		2	4	4			
2 - 3		2	2	3			
3 - 4		4	5	6			
4 - 5		10	11	11			
5 - 6		23	25	21			
6 - 7		75	63	68			
7 - 8		197	220	183			
8 - 9		240	285	268			
9 - 10		233	237	226			
10 - 11		205	225	211			
11 - 12		258	210	235			
12 - 13		200	259	238			
13 - 14		233	275	285			
14 - 15		264	288	307			
15 - 16		341	344	391			
16 - 17		422	384	441			
17 - 18		301	337	338			
18 - 19		175	186	172			
19 - 20		112	127	108			
20 - 21		80	66	82			
21 - 22		60	49	59			
22 - 23		31	35	28			
23 - 24		11	7	14			
Day Total		3481	3654	3704			

15-Minute Volumes

Time Start	Mon	Tue	Wed	Thu				Time Start	Mon	Tue	Wed	Thu			
	Feb 24	Feb 25	Feb 26	Feb 27					Feb 24	Feb 25	Feb 26	Feb 27			
0:00		2	5	0				12:00		46	61	62			
0:15		0	1	3				12:15		61	60	57			
0:30		0	3	1				12:30		43	65	57			
0:45		0	1	1				12:45		50	73	62			
1:00		0	2	2				13:00		57	56	67			
1:15		1	0	0				13:15		63	67	72			
1:30		0	1	1				13:30		49	69	69			
1:45		1	1	1				13:45		64	83	77			
2:00		1	1	0				14:00		61	65	77			
2:15		0	0	2				14:15		61	80	70			
2:30		0	1	1				14:30		55	75	75			
2:45		1	0	0				14:45		87	68	85			
3:00		0	1	1				15:00		83	77	80			
3:15		2	0	1				15:15		93	100	101			
3:30		2	2	1				15:30		86	79	113			
3:45		0	2	3				15:45		79	88	97			
4:00		1	3	5				16:00		112	96	121			
4:15		2	3	2				16:15		117	92	115			
4:30		5	4	2				16:30		86	89	99			
4:45		2	1	2				16:45		107	107	106			
5:00		3	4	2				17:00		73	79	89			
5:15		6	4	6				17:15		83	74	87			
5:30		9	10	5				17:30		80	106	90			
5:45		5	7	8				17:45		65	78	72			
6:00		19	9	11				18:00		63	63	63			
6:15		14	15	14				18:15		43	43	55			
6:30		17	17	15				18:30		39	41	25			
6:45		25	22	28				18:45		30	39	29			
7:00		27	24	24				19:00		26	33	21			
7:15		42	54	39				19:15		31	34	33			
7:30		58	72	60				19:30		32	31	32			
7:45		70	70	60				19:45		23	29	22			
8:00		45	50	51				20:00		17	18	21			
8:15		67	89	66				20:15		21	23	23			
8:30		71	70	73				20:30		22	15	16			
8:45		57	76	78				20:45		20	10	22			
9:00		51	50	71				21:00		27	10	16			
9:15		59	73	59				21:15		14	13	20			
9:30		56	54	52				21:30		6	10	13			
9:45		67	60	44				21:45		13	16	10			
10:00		46	53	49				22:00		11	9	10			
10:15		50	54	53				22:15		8	13	10			
10:30		46	62	53				22:30		4	5	5			
10:45		63	56	56				22:45		8	8	3			
11:00		59	43	41				23:00		4	2	5			
11:15		64	52	62				23:15		4	2	6			
11:30		72	52	59				23:30		1	1	1			
11:45		63	63	73				23:45		2	2	2			



Site notes:

Cordova Bay Rd between Lochside Dr and Walema Ave

Southbound

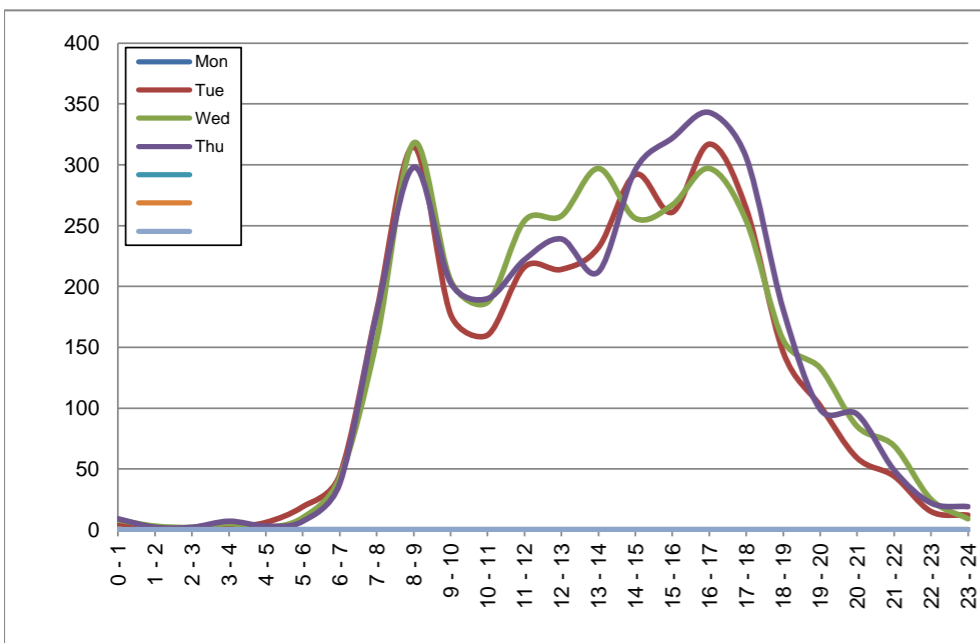
February 24, 2020 to February 27, 2020

Hourly Volumes

Time Period	Mon	Tue	Wed	Thu			
	Feb 24	Feb 25	Feb 26	Feb 27			
0 - 1		5	8	9			
1 - 2		2	3	2			
2 - 3		0	2	2			
3 - 4		2	5	7			
4 - 5		6	2	3			
5 - 6		19	10	7			
6 - 7		45	43	38			
7 - 8		180	156	178			
8 - 9		315	318	298			
9 - 10		177	205	203			
10 - 11		160	187	190			
11 - 12		216	254	222			
12 - 13		214	258	239			
13 - 14		232	297	212			
14 - 15		292	256	296			
15 - 16		261	267	322			
16 - 17		317	297	343			
17 - 18		264	254	306			
18 - 19		146	156	181			
19 - 20		102	133	99			
20 - 21		59	85	95			
21 - 22		44	69	49			
22 - 23		15	25	22			
23 - 24		12	9	19			
Day Total		3085	3299	3342			

15-Minute Volumes

Time Start	Mon	Tue	Wed	Thu			
	Feb 24	Feb 25	Feb 26	Feb 27			
0:00		4	3	4			
0:15		0	4	3			
0:30		0	0	1			
0:45		1	1	1			
1:00		0	1	1			
1:15		0	0	0			
1:30		0	1	1			
1:45		2	1	0			
2:00		0	0	0			
2:15		0	0	2			
2:30		0	1	0			
2:45		0	1	0			
3:00		1	2	3			
3:15		0	0	2			
3:30		1	0	0			
3:45		0	3	2			
4:00		2	0	0			
4:15		2	0	1			
4:30		0	1	1			
4:45		2	1	1			
5:00		3	1	1			
5:15		6	3	1			
5:30		7	4	2			
5:45		3	2	3			
6:00		6	7	5			
6:15		3	9	8			
6:30		17	14	9			
6:45		19	13	16			
7:00		33	32	26			
7:15		33	33	29			
7:30		38	44	46			
7:45		76	47	77			
8:00		67	68	68			
8:15		68	92	84			
8:30		101	94	83			
8:45		79	64	63			
9:00		66	68	52			
9:15		42	46	46			
9:30		30	44	61			
9:45		39	47	44			
10:00		48	42	42			
10:15		29	42	43			
10:30		41	44	45			
10:45		42	59	60			
11:00		56	65	64			
11:15		63	69	55			
11:30		43	62	44			
11:45		54	58	59			
12:00			55	62	62		
12:15			50	75	56		
12:30			64	56	52		
12:45			45	65	69		
13:00			58	83	57		
13:15			47	71	43		
13:30			50	74	59		
13:45			77	69	53		
14:00			68	73	58		
14:15			77	61	76		
14:30			51	58	55		
14:45			96	64	107		
15:00			61	69	97		
15:15			62	57	62		
15:30			65	63	69		
15:45			73	78	94		
16:00			69	82	87		
16:15			84	72	88		
16:30			84	75	79		
16:45			80	68	89		
17:00			81	74	104		
17:15			76	75	69		
17:30			68	64	73		
17:45			39	41	60		
18:00			33	45	53		
18:15			40	42	48		
18:30			38	46	42		
18:45			35	23	38		
19:00			38	65	35		
19:15			28	21	36		
19:30			13	29	16		
19:45			23	18	12		
20:00			19	43	45		
20:15			18	18	21		
20:30			12	13	13		
20:45			10	11	16		
21:00			20	27	15		
21:15			6	22	18		
21:30			9	14	14		
21:45			9	6	2		
22:00			7	8	9		
22:15			3	10	3		
22:30			2	3	5		
22:45			3	4	5		
23:00			7	6	12		
23:15			2	1	3		
23:30			1	0	3		
23:45			2	2	1		



Site notes:

Vehicle Speed Summary

Saanich Engineering Department

Count Id: [M0012-03](#)

Filename: [Cordova Bay Rd between Lochside Dr and Walema Ave-Feb-2020.xlsm](#)

Location: Cordova Bay Rd between Lochside Dr and Walema Ave

Note:

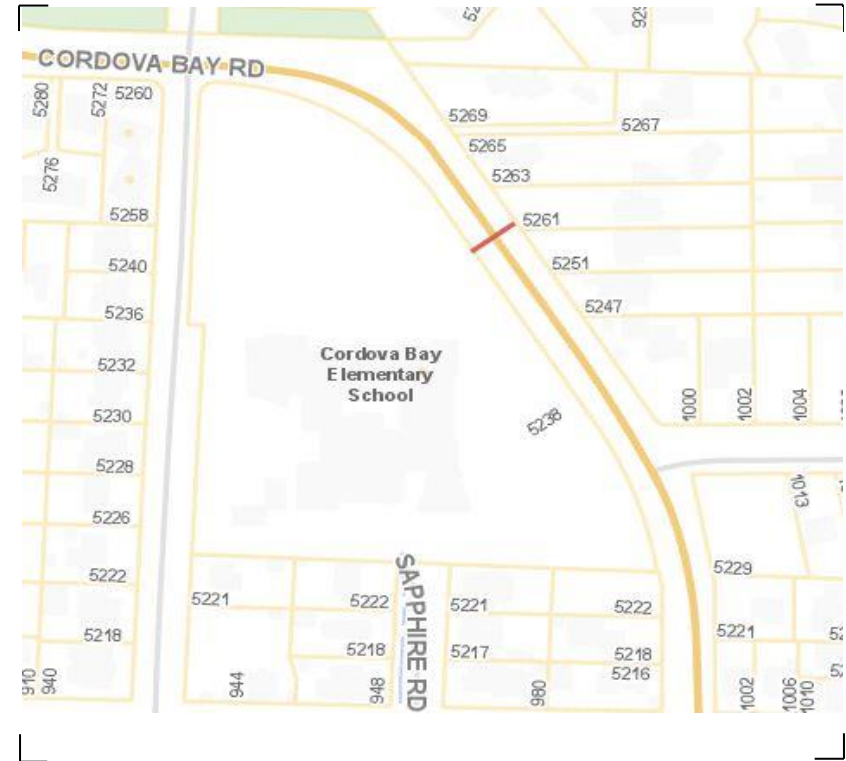
Direction: **North-South**

Dates: **February 25, 2020 To February 27, 2020**

Filtered data

AVG. SPEED	23 mph	37 km/h
50 % SPEED	21 mph	34 km/h
85 % SPEED	30 mph	48 km/h
95 % SPEED	34 mph	54 km/h

Location Map



Cordova Bay Rd between Lochside Dr and Walema Ave

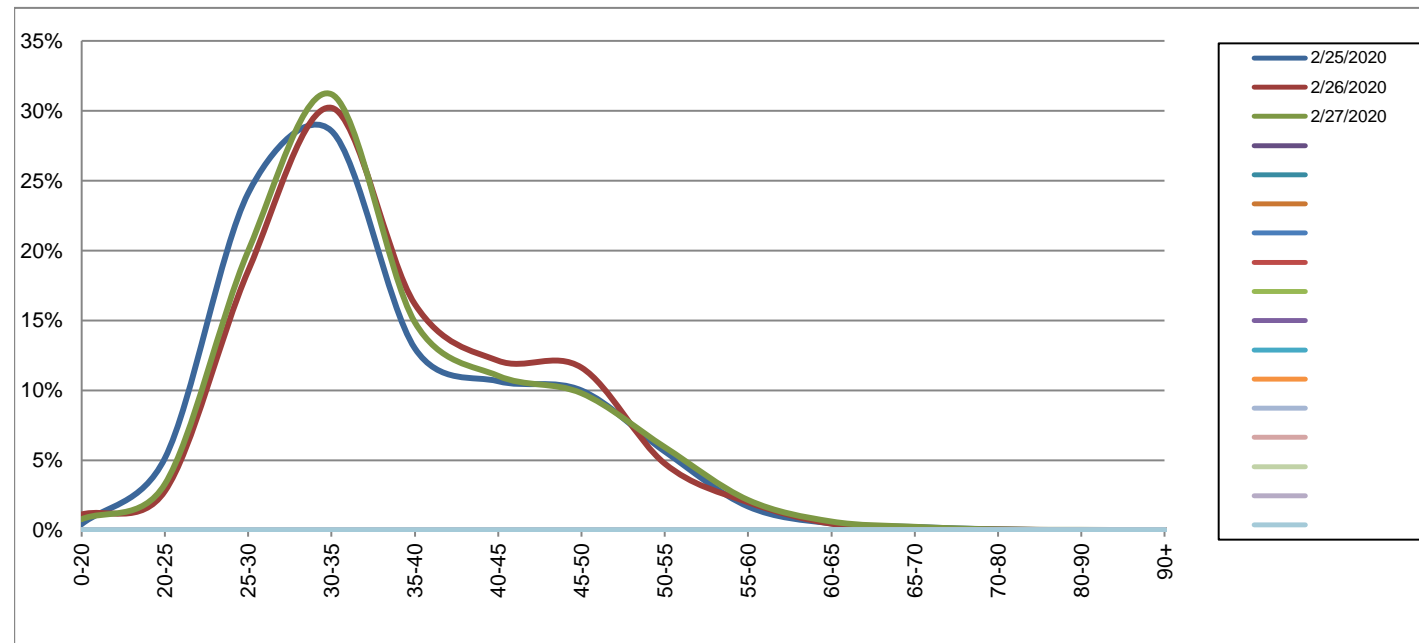
Northbound

February 25, 2020 to February 27, 2020

Daily Speed Bin Percentages															Daily Speed Bin Volumes														Total	Avg.
Bin #	1	2	3	4	5	6	7	8	9	10	11	12	13	14	1	2	3	4	5	6	7	8	9	10	11	12	13	14	Volume	Speed
Bin Speeds	0-20	20-25	25-30	30-35	35-40	40-45	45-50	50-55	55-60	60-65	65-70	70-80	80-90	90+	0-20	20-25	25-30	30-35	35-40	40-45	45-50	50-55	55-60	60-65	65-70	70-80	80-90	90+		
2/25/2020	0.4%	5.1%	24.1%	28.6%	13.0%	10.7%	10.0%	5.6%	1.7%	0.5%	0.2%	0.1%	0.0%	0.0%	15	179	839	994	453	371	348	196	59	17	8	2	0	0	3481	36
2/26/2020	1.1%	2.8%	18.6%	30.2%	16.2%	12.1%	11.6%	4.8%	2.0%	0.5%	0.1%	0.1%	0.0%	0.0%	41	102	678	1104	591	443	425	174	73	17	4	2	0	0	3654	36
2/27/2020	0.8%	3.3%	20.0%	31.2%	14.9%	11.0%	9.8%	5.9%	2.2%	0.6%	0.2%	0.1%	0.0%	0.0%	29	122	740	1155	551	409	363	220	80	23	9	2	1	0	3704	36
Total	0.8%	3.7%	20.8%	30.0%	14.7%	11.3%	10.5%	5.4%	2.0%	0.5%	0.2%	0.1%	0.0%	0.0%	85	403	2257	3253	1595	1223	1136	590	212	57	21	6	1	0	10839	36

Speed Data Summary

Bin #	1	2	3	4	5	6	7	8	9	10	11	12	13	14	Total
Bin Speeds	0-20	20-25	25-30	30-35	35-40	40-45	45-50	50-55	55-60	60-65	65-70	70-80	80-90	90+	
Survey Total	85	403	2257	3253	1595	1223	1136	590	212	57	21	6	1	0	10839
% Total	0.8%	3.7%	20.8%	30.0%	14.7%	11.3%	10.5%	5.4%	2.0%	0.5%	0.2%	0.1%	0.0%	0.0%	100%
Accumulated %	0.8%	4.5%	25.3%	55.3%	70.1%	81.3%	91.8%	97.3%	99.2%	99.7%	99.9%	100.0%	100.0%	100%	
Inverse Accum. %	99.2%	95.5%	74.7%	44.7%	29.9%	18.7%	8.2%	2.7%	0.8%	0.3%	0.1%	0.0%	0.0%	0.0%	
Average Speed	36 KM/H														



Site notes:

Cordova Bay Rd between Lochside Dr and Walema Ave

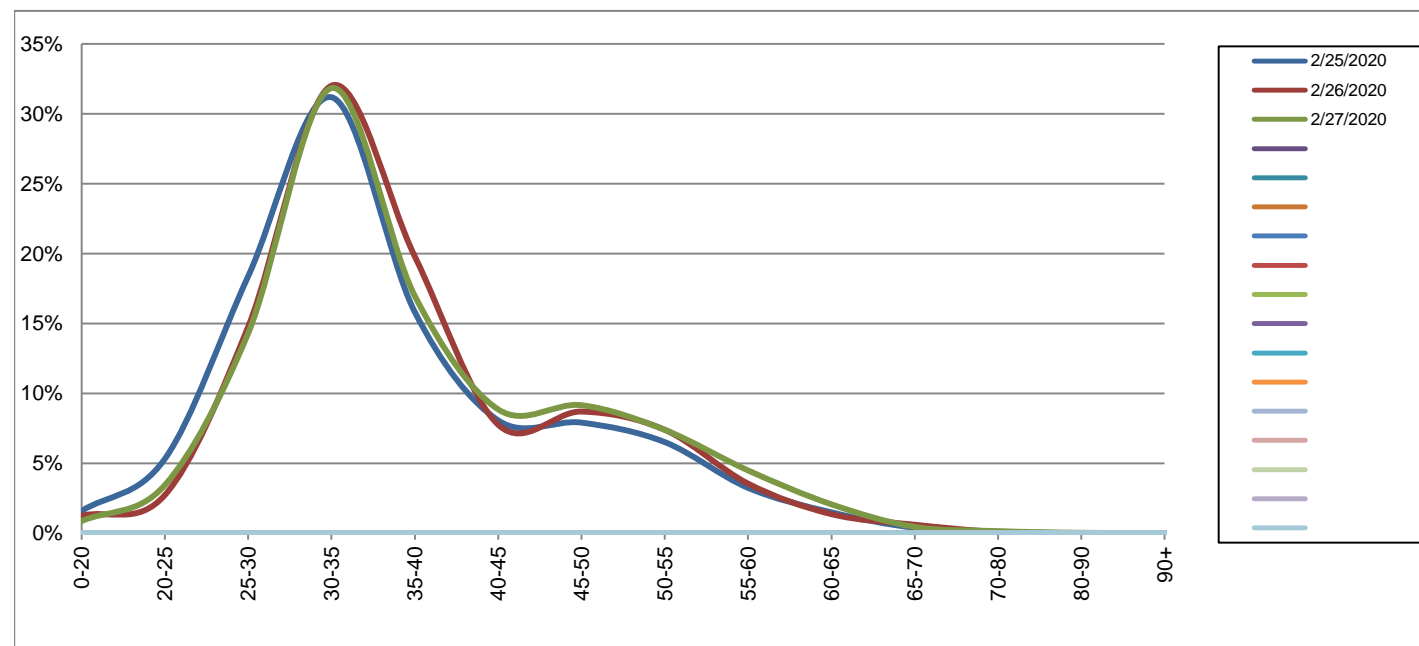
Southbound

February 25, 2020 to February 27, 2020

Daily Speed Bin Percentages															Daily Speed Bin Volumes														Total	Avg.
Bin #	1	2	3	4	5	6	7	8	9	10	11	12	13	14	1	2	3	4	5	6	7	8	9	10	11	12	13	14	Total	Avg.
Bin Speeds	0-20	20-25	25-30	30-35	35-40	40-45	45-50	50-55	55-60	60-65	65-70	70-80	80-90	90+	0-20	20-25	25-30	30-35	35-40	40-45	45-50	50-55	55-60	60-65	65-70	70-80	80-90	90+	Volume	Speed
2/25/2020	1.6%	5.3%	18.4%	31.2%	15.8%	8.1%	7.9%	6.5%	3.2%	1.5%	0.4%	0.1%	0.0%	0.0%	49	164	567	962	488	249	244	201	100	46	12	3	0	0	3085	36
2/26/2020	1.2%	2.7%	14.8%	32.0%	19.8%	7.8%	8.7%	7.4%	3.5%	1.4%	0.6%	0.1%	0.0%	0.0%	41	90	487	1056	653	256	287	244	117	45	20	3	0	0	3299	37
2/27/2020	0.9%	3.4%	14.3%	31.8%	17.0%	8.9%	9.2%	7.4%	4.5%	2.1%	0.4%	0.1%	0.0%	0.0%	29	115	478	1064	567	296	306	247	150	69	15	5	1	0	3342	38
Total	1.2%	3.8%	15.8%	31.7%	17.6%	8.2%	8.6%	7.1%	3.8%	1.6%	0.5%	0.1%	0.0%	0.0%	119	369	1532	3082	1708	801	837	692	367	160	47	11	1	0	9726	37

Speed Data Summary

Bin #	1	2	3	4	5	6	7	8	9	10	11	12	13	14	Total
Bin Speeds	0-20	20-25	25-30	30-35	35-40	40-45	45-50	50-55	55-60	60-65	65-70	70-80	80-90	90+	Total
Survey Total	119	369	1532	3082	1708	801	837	692	367	160	47	11	1	0	9726
% Total	1.2%	3.8%	15.8%	31.7%	17.6%	8.2%	8.6%	7.1%	3.8%	1.6%	0.5%	0.1%	0.0%	0.0%	100%
Accumulated %	1.2%	5.0%	20.8%	52.5%	70.0%	78.3%	86.9%	94.0%	97.7%	99.4%	99.9%	100.0%	100.0%	100%	
Inverse Accum. %	98.8%	95.0%	79.2%	47.5%	30.0%	21.7%	13.1%	6.0%	2.3%	0.6%	0.1%	0.0%	0.0%	0.0%	
Average Speed	37 KM/H														



Site notes:

Cordova Bay Rd between Lochside Dr and Walema Ave

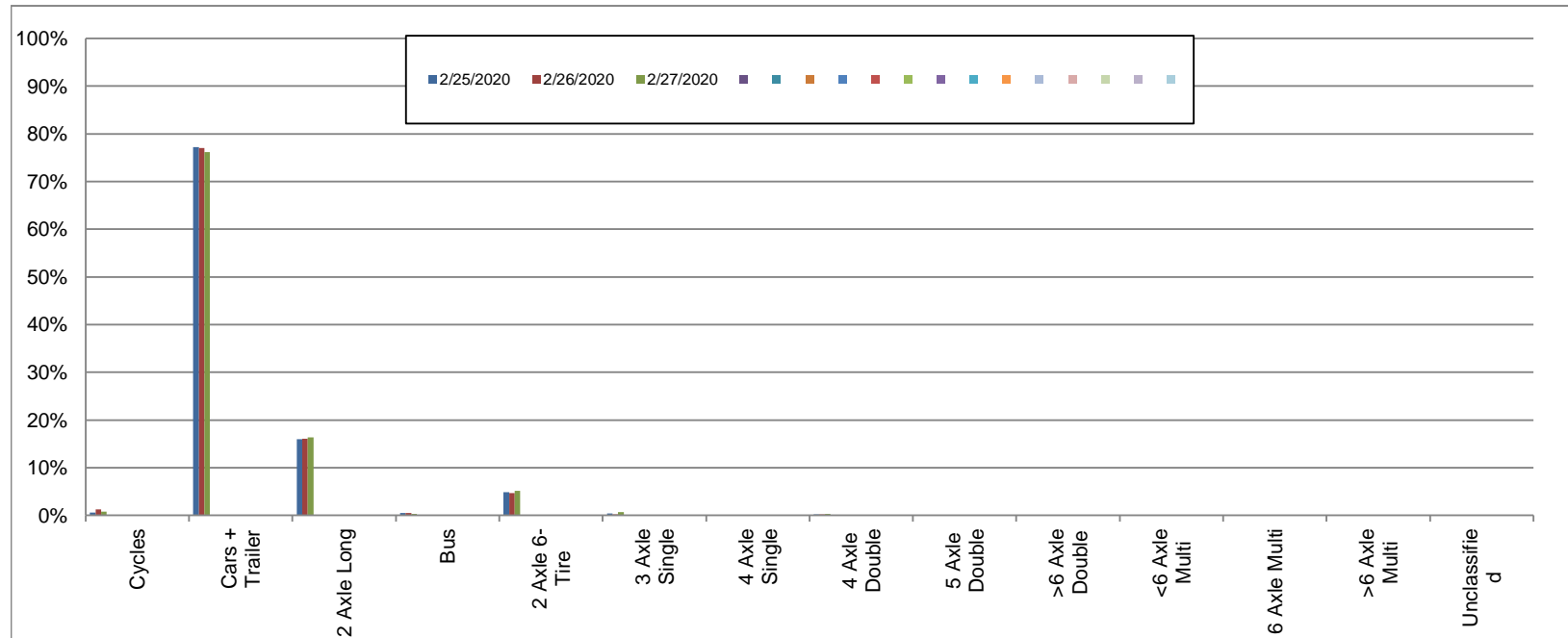
Northbound

February 25, 2020 to February 27, 2020

Daily Class Bin Percentages															Daily Class Bin Volumes														
Bin #	1	2	3	4	5	6	7	8	9	10	11	12	13	14	1	2	3	4	5	6	7	8	9	10	11	12	13	14	Total Volume
Bin Class	Cycles	Cars + Trailer	2 Axle Long	Bus	2 Axle 6-Tire	3 Axle Single	4 Axle Single	4 Axle Double	5 Axle Double	>6 Axle Double	<6 Axle Multi	6 Axle Multi	>6 Axle Multi	Unclassified	Cycles	Cars + Trailer	2 Axle Long	Bus	2 Axle 6-Tire	3 Axle Single	4 Axle Single	4 Axle Double	5 Axle Double	>6 Axle Double	<6 Axle Multi	6 Axle Multi	>6 Axle Multi	Unclassified	
2/25/2020	0.6%	77.2%	16.0%	0.5%	4.9%	0.4%	0.1%	0.2%	0.0%	0.0%	0.0%	0.0%	0.0%	0.0%	21	2689	557	18	170	15	2	8	0	0	0	0	0	1	3481
2/26/2020	1.3%	77.0%	16.1%	0.5%	4.7%	0.2%	0.0%	0.2%	0.0%	0.0%	0.0%	0.0%	0.0%	0.1%	46	2814	588	18	172	8	0	6	0	0	0	0	0	2	3654
2/27/2020	0.8%	76.2%	16.4%	0.3%	5.2%	0.7%	0.0%	0.3%	0.0%	0.0%	0.0%	0.0%	0.0%	0.1%	28	2822	607	12	192	26	1	11	0	0	0	0	0	5	3704
Total	0.9%	76.8%	16.2%	0.4%	4.9%	0.5%	0.0%	0.2%	0.0%	0.0%	0.0%	0.0%	0.0%	0.1%	95	8325	1752	48	534	49	3	25	0	0	0	0	0	8	10839

Class Data Summary

Bin #	1	2	3	4	5	6	7	8	9	10	11	12	13	14	Total Volume
Bin Class	Cycles	Cars + Trailer	2 Axle Long	Bus	2 Axle 6-Tire	3 Axle Single	4 Axle Single	4 Axle Double	5 Axle Double	>6 Axle Double	<6 Axle Multi	6 Axle Multi	>6 Axle Multi	Unclassified	Total Volume
Survey Total	95	8325	1752	48	534	49	3	25	0	0	0	0	0	8	10839
% Total	0.9%	76.8%	16.2%	0.4%	4.9%	0.5%	0.0%	0.2%	0.0%	0.0%	0.0%	0.0%	0.0%	0.1%	100%
Accumulated %	0.9%	77.7%	93.8%	94.3%	99.2%	99.7%	99.7%	99.9%	99.9%	99.9%	99.9%	99.9%	99.9%	100.0%	
Inv. Accum. %	99.1%	22.3%	6.2%	5.7%	0.8%	0.3%	0.3%	0.1%	0.1%	0.1%	0.1%	0.1%	0.1%	0.0%	



Classification Descriptions

Bin #	Bin Description
1	Motorcycles
2	Passenger cars, including those with recreational trailers
3	2-axle pick-ups, vans, and RVs, including those with recreational trailers
4	Buses
5	2-axle, 6-tire single units
6	3-axle single units
7	4-axle single units
8	3-axle or 4-axle double unit
9	5-axle double unit
10	6-, 7-, or 8-axle double unit
11	5-axle multiple unit
12	6-axle multiple unit
13	7-or-more-axle multiple unit
14	Vehicles that could not be classified

Site notes:

Cordova Bay Rd between Lochside Dr and Walema Ave

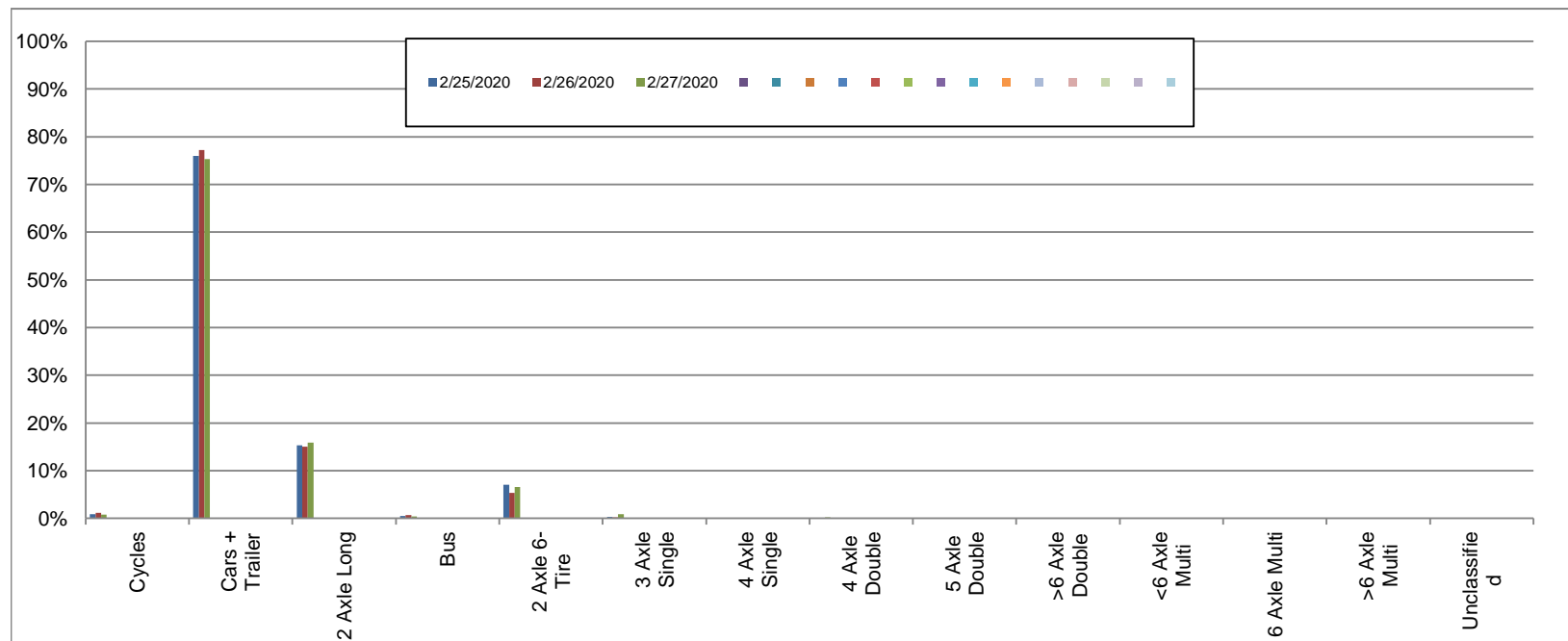
Southbound

February 25, 2020 to February 27, 2020

Daily Class Bin Percentages															Daily Class Bin Volumes														
Bin #	1	2	3	4	5	6	7	8	9	10	11	12	13	14	1	2	3	4	5	6	7	8	9	10	11	12	13	14	Total Volume
Bin Class	Cycles	Cars + Trailer	2 Axle Long	Bus	2 Axle 6-Tire	3 Axle Single	4 Axle Single	4 Axle Double	5 Axle Double	>6 Axle Double	<6 Axle Multi	6 Axle Multi	>6 Axle Multi	Unclassified	Cycles	Cars + Trailer	2 Axle Long	Bus	2 Axle 6-Tire	3 Axle Single	4 Axle Single	4 Axle Double	5 Axle Double	>6 Axle Double	<6 Axle Multi	6 Axle Multi	>6 Axle Multi	Unclassified	
2/25/2020	0.8%	76.0%	15.3%	0.5%	7.0%	0.3%	0.0%	0.1%	0.0%	0.0%	0.0%	0.0%	0.0%	0.0%	26	2344	473	16	216	8	0	2	0	0	0	0	0	0	3085
2/26/2020	1.2%	77.3%	15.1%	0.7%	5.3%	0.2%	0.0%	0.1%	0.0%	0.0%	0.0%	0.0%	0.0%	0.2%	38	2549	497	24	175	7	1	3	0	0	0	0	0	5	3299
2/27/2020	0.7%	75.3%	15.9%	0.4%	6.5%	0.9%	0.0%	0.2%	0.0%	0.0%	0.0%	0.0%	0.0%	0.0%	25	2518	530	13	218	29	1	8	0	0	0	0	0	0	3342
Total	0.9%	76.2%	15.4%	0.5%	6.3%	0.5%	0.0%	0.1%	0.0%	0.0%	0.0%	0.0%	0.0%	0.1%	89	7411	1500	53	609	44	2	13	0	0	0	0	0	5	9726

Class Data Summary

Bin #	1	2	3	4	5	6	7	8	9	10	11	12	13	14	Total Volume
Bin Class	Cycles	Cars + Trailer	2 Axle Long	Bus	2 Axle 6-Tire	3 Axle Single	4 Axle Single	4 Axle Double	5 Axle Double	>6 Axle Double	<6 Axle Multi	6 Axle Multi	>6 Axle Multi	Unclassified	Total Volume
Survey Total	89	7411	1500	53	609	44	2	13	0	0	0	0	0	5	9726
% Total	0.9%	76.2%	15.4%	0.5%	6.3%	0.5%	0.0%	0.1%	0.0%	0.0%	0.0%	0.0%	0.0%	0.1%	100%
Accumulated %	0.9%	77.1%	92.5%	93.1%	99.3%	99.8%	99.8%	99.9%	99.9%	99.9%	99.9%	99.9%	99.9%	100.0%	
Inv. Accum. %	99.1%	22.9%	7.5%	6.9%	0.7%	0.2%	0.2%	0.1%	0.1%	0.1%	0.1%	0.1%	0.1%	0.0%	



Classification Descriptions

Bin #	Bin Description
1	Motorcycles
2	Passenger cars, including those with recreational trailers
3	2-axle pick-ups, vans, and RVs, including those with recreational trailers
4	Buses
5	2-axle, 6-tire single units
6	3-axle single units
7	4-axle single units
8	3-axle or 4-axle double unit
9	5-axle double unit
10	6-, 7-, or 8-axle double unit
11	5-axle multiple unit
12	6-axle multiple unit
13	7-or-more-axle multiple unit
14	Vehicles that could not be classified

Site notes: